

RENTAL



TOUR GUIDE SYSTEMS

Developed by experts - Digital. Compact. Easy.
Tour guide systems for the industry, tourism and culture.

MOBILE SPEAKER SYSTEM

The expedient alternative to a permanently
installed system, perfect sound reinforcement
for any event.

03 Why rent instead of buying?

04 Procedure for renting

06 TOUR GUIDE SYSTEMS

09 Key reasons and features

14 Overview

16 TOM-Audio TG-200 eTour

18 TOM-Audio TG-101 eTour

20 Audioguide GroupyCompany

22 Accessories

www.bmsaudio.com/rental

www.bmsaudio.com/rental/tom-audio-tg-200

www.bmsaudio.com/rental/tom-audio-tg-101

www.bmsaudio.com/rental/audioguide-groupycompany

29 MOBILE SPEAKER SYSTEM

31 TOM-Audio PM-55

33 Accessories

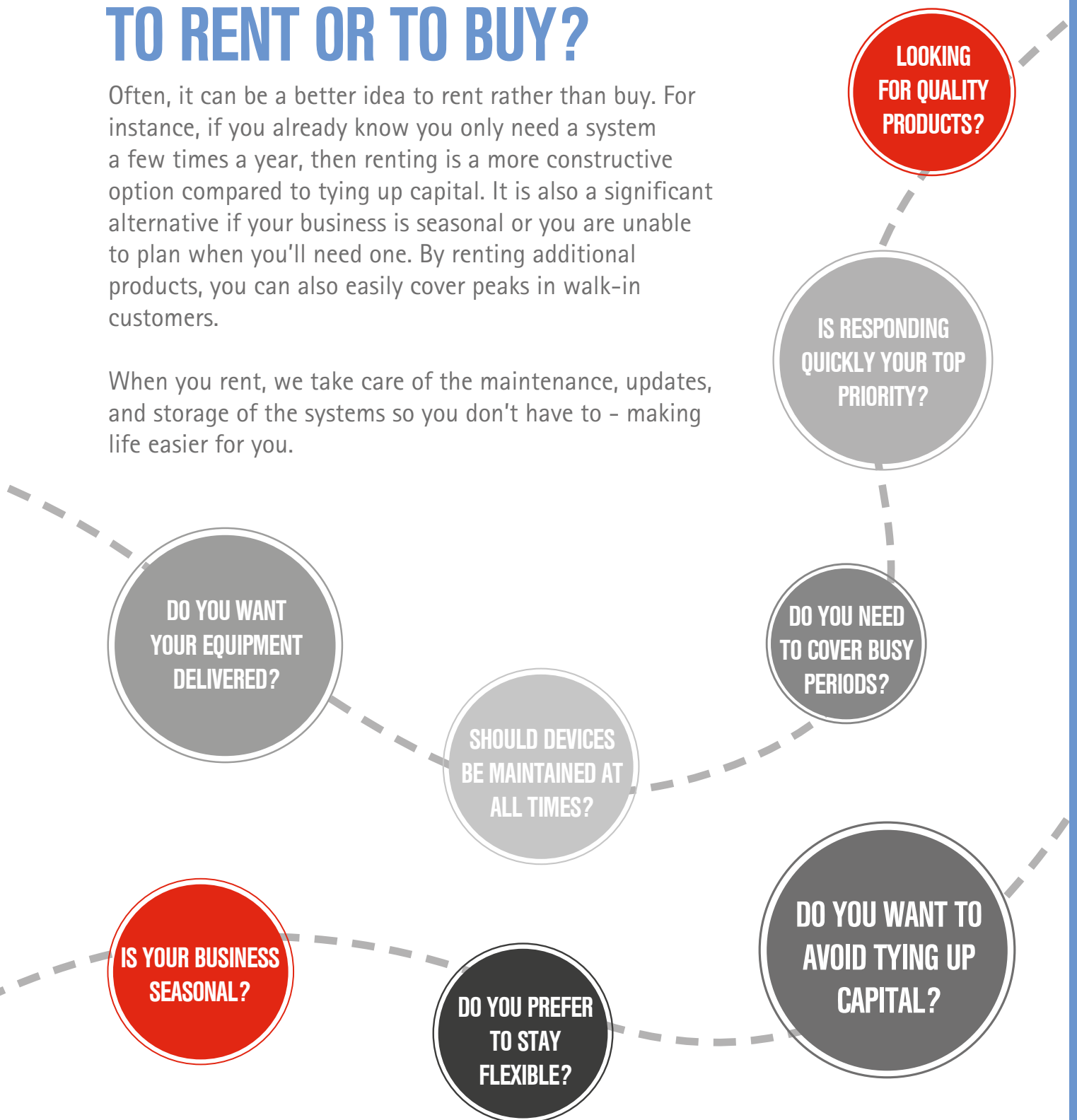
www.bmsaudio.com/rental/tom-audio-pm-55



TO RENT OR TO BUY?

Often, it can be a better idea to rent rather than buy. For instance, if you already know you only need a system a few times a year, then renting is a more constructive option compared to tying up capital. It is also a significant alternative if your business is seasonal or you are unable to plan when you'll need one. By renting additional products, you can also easily cover peaks in walk-in customers.

When you rent, we take care of the maintenance, updates, and storage of the systems so you don't have to - making life easier for you.



Attention: Due to high customs clearing costs, we do not rent to Switzerland or Liechtenstein.

PROCEDURE FOR RENTING

This is how easy it is to rent from BMS Audio

From your initial inquiry to placing the order to delivery and collection
- we've thought of everything to make it as convenient and easy for you as possible!



1. Non-binding inquiry

- 1 Visit our website at www.bmsaudio.com
- 2 There, go to ['Rental'](#)
- 3 Select your rental product
- 4 Fill in the relevant inquiry form

Alternatively, you can call one of
our service staff: +49 - 7951 9622 - 200

2. Quote and order by [email](#)

You'll receive a no-obligation quote within one working day after your inquiry. If you want to accept it, you can order the tour guide system or mobile audio solution quickly and easily by replying to the email.

Your advantage:
It's simple and
straightforward!

3. Delivery to your requested location

All devices are cleaned, disinfected and inspected before leaving our company. Additionally, digital devices receive software updates on a regular basis.

Our products are delivered directly to your specified address within Germany and the European Union.

Your advantage:

You only pay from the first day of use!

We take care of cleaning and servicing the devices and systems.



4. Collection at your requested location

When your tour or event is finished, BMS Audio will arrange for the collection of the rental equipment from your requested location. The place of collection is completely independent of the delivery location.

Your advantage:

We take care of everything!

5. Finalisation

You will receive an e-mail confirming that the rental process was completed properly. The process includes checking that the rental equipment is complete and in working order.

Your advantage:

The agreed rental is binding.



TOUR GUIDE SYSTEMS

DEVELOPED BY EXPERTS - DIGITAL. COMPACT. EASY.

TOUR GUIDE SYSTEMS FOR THE INDUSTRY, TOURISM AND CULTURE.

TOUR GUIDE SYSTEMS

What is a tour guide system?

A [tour guide system](#) serves to guide groups of people, for instance on city tours.

But tourism isn't the only field where tour guide systems are used. Industry has also long since discovered the benefits of conveying information clearly and distinctly. Small earpieces have proved their value during audits and guided tours of shop floors for customers.

**MORE THAN JUST AN
AUDIO GUIDE - A TOUR
GUIDE SYSTEM IS
ALWAYS MANAGED BY
A PERSON.**



Audio guide vs. tour guide system

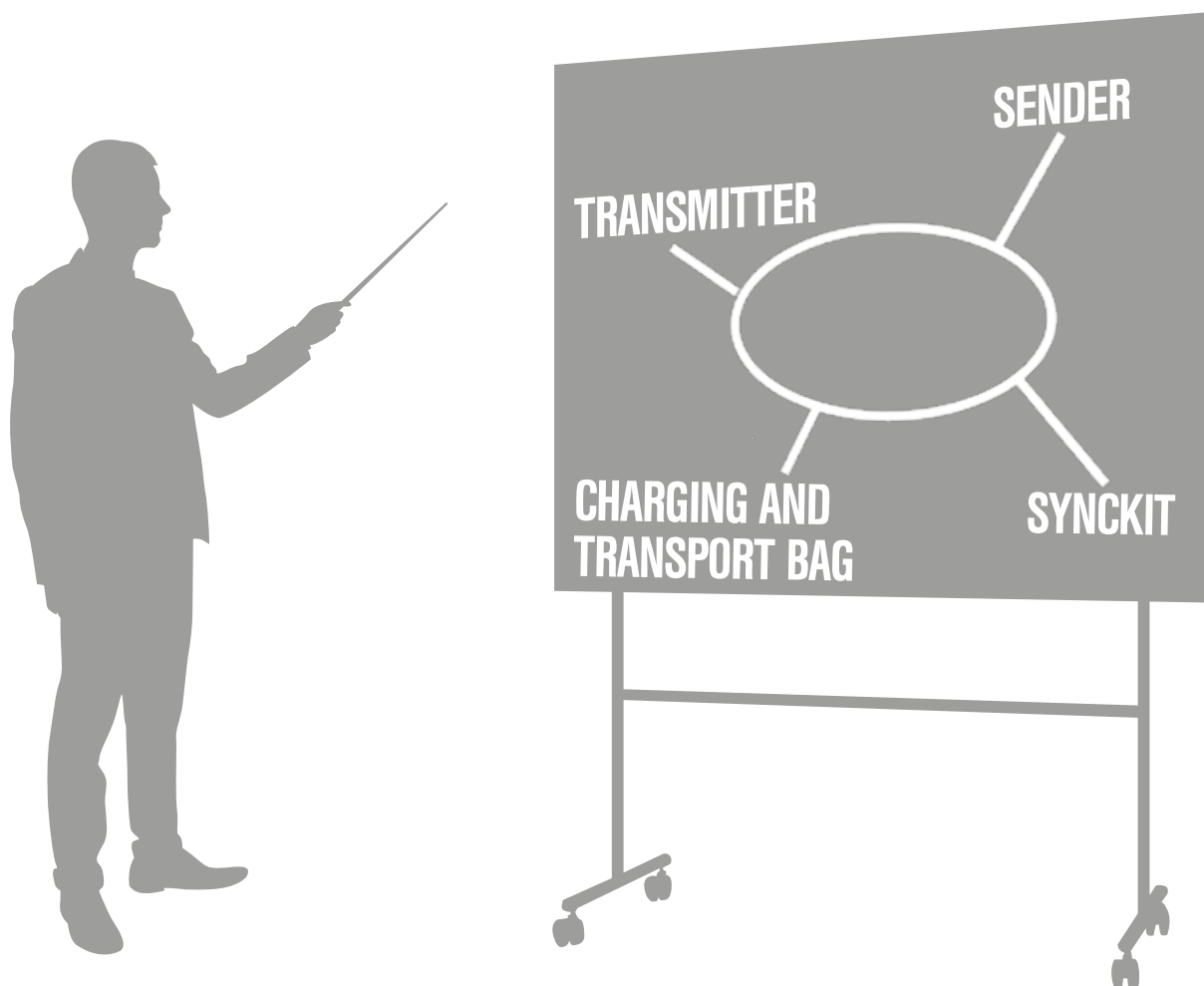
Tour guide systems are frequently mistaken for audio guides. That's why we would like to use this opportunity to explain the difference:

An audio guide is a device which takes people on a tour of a museum or exhibition with ready-made audio. In contrast, a tour guide system facilitates communication between a speaker and their audience. The speaker can protect their voice while the audience can hear everything clearly. Our dialogue-capable tour guide system even enables controlled dialogue with the group.

Our new product [GroupyCompany](#) combines the functions of an audio guide with those of a tour guide system, making it a versatile choice for a wide range of purposes.

A well-rounded package!

Each system always consists of these components:



Sustainability

Our goal is to sell durable products and offer high-quality, reusable accessories. That's why all our tour guide systems are fitted with rechargeable lithium-polymer batteries. Additionally, the transport bags double as charging stations for our systems.

Thanks to our disinfectant wipes, our high-quality receivers can be reused without a second thought. Sustainability can be so easy.



7 KEY REASONS

for a tour guide system from BMS Audio



... to make listening in easy

when guiding groups consisting of a mix of nationalities requiring interpreters.



... to remain flexible

because group sizes can't always be predicted. This is where the easy grouping function comes in.



... to start a dialogue

when ideas are shared directly during complex presentations, educational events or audits.



... to stay mobile

when speaking to listeners over large distances. Like on factory premises and at production lines.



... to be understood everywhere

whether during factory tours, city tours, on cruises and coach trips, or in hotels.



... to keep quiet

when required. Like in museums, sacred buildings or in court.



... to be sustainable

we use hygienically treated headphones and environmentally friendly rechargeable batteries.



4 KEY FEATURES

of the tour guide systems from BMS Audio



1 Central channel switching

If the wireless connection is adversely affected by external factors, like other groups transmitting on the same frequency, the entire group can quickly and conveniently change channels.

BMS solution: Channels are easily switched in just a few steps, and without the receivers needing to do anything. A sufficient number of channels are available to choose from for transmission, depending on the device.

How it works:

- 1 Switch the transmitter to channel mode.
- 2 Select the channel.
- 3 Confirm the channel.
- 4 All receivers are now on the new channel.





2 Dialogue functionality

Informing people is a good thing – dialogue is even better. Being able to ask the guide questions, comment on matters and voice concerns is a real bonus.

BMS solution: The TOM-Audio TG-101 eTour digital tour guide system features a dialogue function on the transmitter and receiver. For the first time, it is possible to enable dialogue between the guide and the group at the push of a button.

To avoid a confusing hubbub, Q&A sessions are always activated and ended by the guide. Only one participant may talk at a time. All others listen in for the duration.

How it works:

- 1 To start a dialogue, the guide activates the dialogue function.
- 2 The first guest to press the 'Talk' button on their receiver has the floor and can ask the group a question.
- 3 Once finished, the guest lets go of the button and the next one can chime in.
- 4 To finish the dialogue, the guide deactivates the dialogue function.



3 Grouping & synchronisation

First separately and then together – or vice versa? A group's size is not always predictable, and some tour programs require the group to split up.

BMS solution: Thanks to the clever TOM-Audio SyncKit and the charging and transport bag, this is accomplished quickly and easily.



How it works:

- 1 Place a transmitter and all receivers from a group into the charging bag.
- 2 Set a radio channel on the TOM-Audio SyncKit and place it into the charging bag as well.
- 3 All TOM-Audio devices in the charging bag will synchronise to the radio channel set on the TOM-Audio SyncKit.
- 4 Repeat the procedure with the next group using a different radio channel.



4 Charging and transport bag

To protect the environment, all tour guide systems from BMS Audio are operated with rechargeable lithium polymer batteries which ensure 20 hours of operating time, and even 30 hours for the TOM-Audio TG-200 eTour. But where do you charge all the devices, and where do you store them?

BMS solution: Transport and charging in one.

How it works:

- 1 Place the devices into the slots in the case.
- 2 Plug the charging and transport bag into the mains.
- 3 Charge.



AT A GLANCE

Which tour guide system is right for my needs?



TOM-Audio TG-200 eTour

Central channel switching

Grouping/synchronisation

Charging and transport bag

Digital & updateable

Battery time approx. 30 hours

Range up to 100 metres

18 radio frequencies in the EU

52 German radio frequencies

-

From page
16

[**START RENTAL INQUIRY HERE**](#)



TOM-Audio TG-101 eTour

Central channel switching

Grouping/synchronisation

Charging and transport bag

Digital & updateable

Charging time 15 - 20 hours

Range up to 70 metres

16 radio frequencies in the EU

-

Dialogue functionality

From page
18

[**START RENTAL INQUIRY HERE**](#)

This depends entirely on your applications and the associated requirements. We offer a device with a dialogue function and a system with a larger battery as well as more stable range, which can prove useful on city tours. GroupyCompany is a hybrid between an audio guide and tour guide system.



Audioguide GroupyCompany

Automatic channel switching

Automatic grouping

Charging and transport bag

Digital & updateable

Battery time approx. 13 hours

Dual speaking (2 guides in parallel)

2.4 GHz licensed worldwide

Multilingual audio recordings

Simultaneous multilingualism

Text-to-Speech

Location-based content

Audio recordings

From page
20

[START RENTAL INQUIRY HERE](#)

TOM-AUDIO TG-200 ETOUR

Features:

- ✓ 52 German channels
- ✓ 18 EU-wide channels
(including Liechtenstein and Switzerland)
- ✓ Enhanced battery power
- ✓ Range up to 100 m
- ✓ More stable radio connection

TG-200R digital 70-channel pocket receiver

The digital 70-channel UHF technology offers generous alternatives in the event of frequency collisions, and enables several visitor groups to be guided at the same time in close proximity. Particularly at tourist hotspots, the 52 channels approved for Germany ensure a more interference-free transmission.

Receiver



TG-200T digital 70-channel pocket transmitter

The TOM-Audio TG-200T pocket transmitter is the device for the tour guide. With an operating time of approx. 30 hours, this pocket transmitter allows the guide to speak and change the channel in the event of external interference from a single device.



SK-200 SyncKit

If visitor groups are to be split up or several groups are expected, the respective devices must be assigned functioning radio channels.

With the TOM-Audio SK-200 SyncKit and a charging and transport bag, this is quick and easy to organise.



TG-200 ST stationary transmitter

The stationary TOM-Audio TG-200ST digital UHF transmitter is used together with the TOM-Audio TG-200R pocket receiver for whispered interpreting.



TG-200H handheld digital microphone

The TOM-Audio TG-200H hand transmitter is used in conjunction with the TOM-Audio TG-200R pocket receiver for guided tours. The cardioid characteristic effectively suppresses loud ambient noise.

GOOD TO KNOW:

As the lion's share of tour guide systems broadcasts on the crowded EU frequencies, having 52 channels to choose from in Germany ensures a guided tour with less interference.

Recommended use:

The TOM-Audio TG-200 eTour is the first choice when it comes to stable radio transmission, long battery life and long range. Especially in tourism, the possibility of using the devices for up to 10 days without recharging is appreciated.

>> START RENTAL INQUIRY HERE

TG-101
eTOUR

TOM-AUDIO TG-101 eTOUR

Features:

- ✓ Switchable dialogue function
- ✓ Extremely small, light and robust



TG-101T digital 56-channel pocket transmitter

The TOM-Audio TG-101T pocket transmitter is used together with the TOM-Audio TG-101R pocket receiver. Its special feature is the switchable dialogue function.

TG-101R digital 56-channel pocket receiver

The digital pocket receiver features a built-in microphone and a speak button. The guest's view is transmitted to the other members of the group and the guide.

SK-100 SyncKit

If visitor groups are to be split up or several groups are expected, the respective devices must be assigned functioning radio channels.

With the TOM-Audio SK-100 SyncKit and a charging and transport bag, this is extremely quick and easy to organise.





Recommended use:

The small and handy TOM-Audio TG-101 eTour digital tour guide system is used whenever the tour guide and guests need to communicate. Questions, comments and concerns can be communicated very easily with this system. An aspect which can be especially significant during complex presentations, educational events or audits.

GroupyCompany audio guide

The 'hybrid' audio guide with a tour guide system

The GroupyCompany system enables you to guide your group with all the advantages of a tour guide system and to supplement the tour with audio recordings at certain points. Alternatively, GroupyCompany can also serve exclusively as an audio guide.

This feature helps you accommodate international visitors. With this dual function, prepared content in any language can be copied to the devices and played while the speaker continues to give a custom tour to the other part of the group.





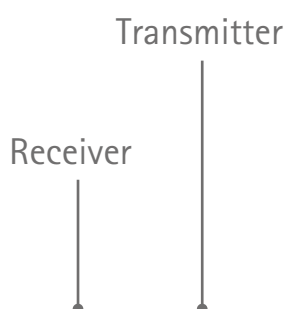
How it works:

- 1 The guest selects their language at the start of the tour.
- 2 The group is automatically assigned to the guide when the devices are switched on.
- 3 The guide starts the audio file for all guests at the desired location.
- 4 The audio file is played in the guest's selected language. Alternatively, the guide can continue to speak to the guests (in their native language, for instance).

'Audioguide GroupyCompany

Features:

- ✓ A tour guide system and audio guide in one
- ✓ Dual-speaking function for two guides in parallel
- ✓ Integrated GPS system
- ✓ Text-to-speech generator for 18 languages
- ✓ Integrated anti-theft protection
- ✓ Charging, transport and synchronising in one



GroupyCompany Tag

The tag is for visitors. Basic functions are listening to recorded audio files (MP3 format, 128 KBit CBR) and receiving and playing back the guide's speech via the built-in radio receiver. Audio is output via the built-in speaker or connected headphones.

GroupyCompany Controller Tag

The controller tag is for the guide. It basically offers the same functionality as the tag for the visitor. A controller identifier is also pre-programmed at the factory. The pre-configured devices offer the possibility to start audio files for the guests and to transmit the voice of the tour guide live to their group via an external headset microphone.

GroupySync Software

The Windows software GroupySync Data enables you to edit, manage and update data. Configuration and content data are carried out in conjunction with the CS25/CS56 charging systems. The text-to-speech function generates speech files from text. This does away with needing to make separate recordings. Additionally, individual labels for the tags can be set up in the software.



Groupy Charging System CS25/CS56

With the CS25 and CS56 charging systems, 25 and 56 tags respectively can be charged simultaneously in the provided slots. The outermost right row of slots has the additional special feature that the tags inside can be connected to a PC via USB.

Groupy Controller-Headset

GroupyCompany is ideal with our especially sturdy neckworn microphone. It is impressively robust and comfortable to wear.



Recommended use:

GroupyCompany is not only perfect for group tourism, it also shines in company and factory tours with high ambient noise. Impress your customers with GroupyCompany's multilingual and co-guide options. They will also love its intuitive controls.

>> [START RENTAL INQUIRY HERE](#)



ACCESSORIES

For your guests and listeners

TOM-AUDIO PH-03



MONO EARPHONE - SOFT EAR HOOK

Dynamic mono single-ear receiver with soft hook and stronger magnet system.



TOM-AUDIO PH-20



STEREO HEADPHONES

Particularly space-saving thanks to foldable ear cups. Very comfortable.



TOM-AUDIO PH-04



DISPOSABLE TWO-EAR HEADPHONES

Stereo earbuds can be worn on the left and right sides.



TOM-AUDIO LW-90



NECK RING LOOP/ INDUCTION LOOP

Audio signals are transmitted to hearing aids with T-coils or cochlear implants.



HOWARD LEIGHT SYNC



HEARING PROTECTION - HEADSET

Offers optimum protection from the majority of minor to moderate noise levels.





ACCESSORIES

For the guide and speaker

TOM-AUDIO ES-6301



EARSET MICROPHONE

For use with the pocket transmitter incl. cable and case. Very filigree, light construction and comfortable to wear.



TOM-AUDIO HS-2301



HEADSET MICROPHONE/ NECKWORN MICROPHONE

For use with the pocket transmitter. Top quality condenser microphone incl. cable and case.



TOM-AUDIO HS-2101-B



ROBUST HEADSET

Robust neckworn microphone. Ideal for industrial environments.



TOM-AUDIO DM-20



ELECTRET CONDENSER HANDHELD MICROPHONE

Can connect directly to the transmitter. The cardioid characteristic reduces ambient noise.



TOM-AUDIO TG-200H



DIGITAL 56-CHANNEL UHF HANDHELD MICROPHONE

The cardioid pattern effectively suppresses loud ambient noise.



TOM-AUDIO HS-4010



OVERHEAD HEADSET

Light, snug headset, adjustable headstrap, covers ear well, flexible microphone arm, wearable on the left or right.



TOM-AUDIO ES-4050



MONO HEADSET

Very light, robust headset, can be worn over the ear, easy to put on.



TOM-AUDIO ES-4060



MONO HEADSET

Very lightweight headset to be worn over the ear, simple hygiene procedure.



TOM-AUDIO ES-4460



ONE-EAR RECEIVER WITH CHIN STRAP

Very lightweight headset to wear over the ear, easy to put on, flexible microphone arm, 3.5 mm jack plug.





ACCESSORIES

For the guide and speaker

TOM-AUDIO HS-4415

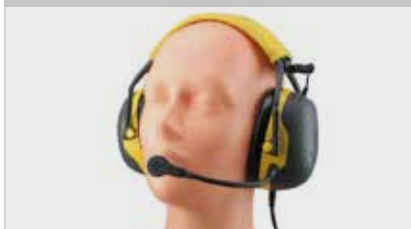


HEARING PROTECTION HEADSET

Offers optimum protection from the majority of minor to moderate noise levels.



TOM-AUDIO HS-4416



HEARING PROTECTION HEADSET

Offers optimum protection in extreme loud conditions.





ACCESSORIES

Storage, charging and data transmission

TOM-AUDIO TC-12



CHARGING AND TRANSPORT BAG FOR 12 DEVICES

For small groups or as an extension.



TOM-AUDIO TC-35



CHARGING AND TRANSPORT BAG FOR 35 DEVICES

Compact charging and transport bag for 35 devices. Just the size of a typical office bag.



TOM-AUDIO TC-50



CHARGING AND TRANSPORT BAG FOR 50 DEVICES

Compact charging and transport bag for 50 devices.



GROUPY CS25



CHARGING AND DATA TRANSMISSION FOR 25 DEVICES

Compact charging and transport bag for 50 devices. USB connector for PC.



GROUPY CS56



CHARGING AND DATA TRANSMISSION FOR 56 DEVICES

Compact charging and transport bag for 50 devices. USB connector for PC.



ACCESSORIES

Practical must-haves

TOM-AUDIO



DISINFECTANT WIPE

Single-use disinfectant wipe for hygienic treatment.



TOM-AUDIO TG-100LY



LANYARD

Carry the transmitter and receivers comfortably and safely.



TOM-AUDIO CABLE



3.5 MM STEREO JACK

0.5 metres, 3.5 mm for vehicles



ANTI-THEFT PROTECTION



ANTI-THEFT DEVICE

An alarm signals when a receiver passes the defined area.





PM-55



MOBILE SPEAKER SYSTEM

THE EXPEDIENT ALTERNATIVE TO A PERMANENTLY
INSTALLED SYSTEM, PERFECT SOUND REINFORCEMENT
FOR ANY EVENT.

MOBILE SPEAKER SYSTEM

Why mobile speakers?

In contrast to fixed installations, portable speaker systems offer substantial economic efficiency as the range of applications for Mobile speaker system is considerably larger – especially in municipal environments.

The system can be expanded. Mobile, wireless speaker systems with wireless microphones can also be used for events without any problems. In order to combine hosting and music input, our systems provide ducking with a built-in USB- and SD-card reader.



FOR BIG EVENTS:
SIMPLY EXPAND THE
SPEAKER SET OR COMBINE
IT WITH EXISTING
DEVICES.

What will it be used for?

Mobile speaker systems with the appropriate equipment are available for a wide variety of applications: trainings, promotions, lectures – indoors and outdoors –, in gyms, classrooms, on shop floors, in halls or pedestrian zones.

PM-55



TOM-AUDIO PM-55

Features:

- ✓ Compact lightweight speaker with carrying handle and shoulder strap
- ✓ Weight approx. 2 kg
- ✓ Playback device for USB stick and SD card, switchable to MP3 format
- ✓ Wired microphone
- ✓ Easy to use
- ✓ Device features volume controls for speakers and player
- ✓ Charging and operating indicator
- ✓ Operation via rechargeable battery or mains connection

GOOD TO KNOW:

The mobile speaker system TOM-Audio PM-55 is easy to carry by hand or shoulder strap. A lithium-ion battery means the system is very light. It only weighs 2 kg!

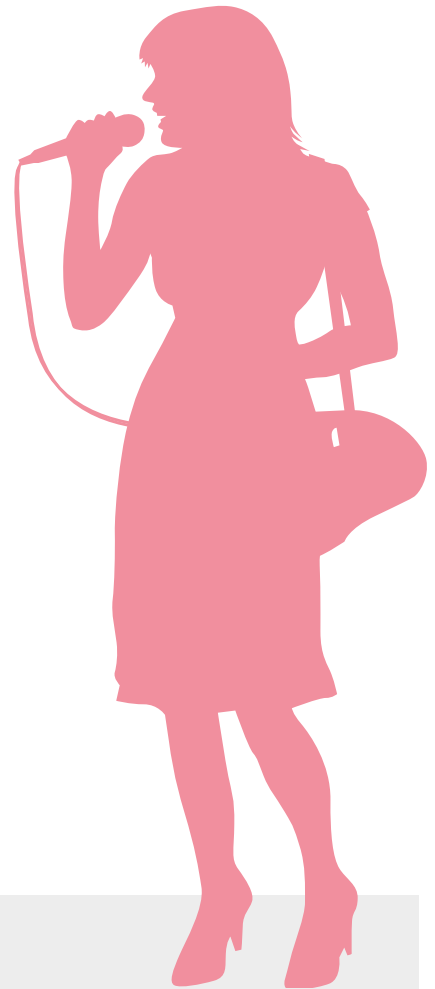


The speaker

The 2-way speaker impresses with its natural, brilliant and clear speech transmission. With an output of 35 watts, the system also covers a wide radius off-road. Easily call late excursionists to the bus and make sure no one is left behind, even when touring a construction site: the participants stay together and the group hears what you're saying.

On the go or on the spot?

Its light weight and practical lanyard make the TOM-Audio PM-55 easy to carry. Additionally, the speaker can be mounted on a stand if an address will be held at a predetermined location. The small speaker system is also highly useful for small indoor and outdoor ceremonies, award ceremonies, ground-breaking ceremonies and staff briefings.



Recommended use:

Your indispensable helper for announcements, speeches, addresses – on the road and at any location. Also well-suited for guided tours of all kinds, such as company tours or site inspections, and even – with limitations – city tours.

>> [START RENTAL INQUIRY HERE](#)



ACCESSORIES

Microphones

TOM-AUDIO UH-103



WIRELESS HANDHELD MICROPHONE

Cardioid characteristic, 6 hours of operating time, direct channel switching, 16 radio channels.



TOM-AUDIO ES-6301



EARSET MICROPHONE

Condenser microphone (back electret), 23 g light, handy and nearly invisible, adjustable microphone arm.



TOM-AUDIO HS-2301



HEADSET MICROPHONE

23 g light, cardioid characteristic with silicone-cushioned ear hooks, nearly invisible, adjustable microphone arm.



TOM-AUDIO HS-2101-B



RUGGED SPORTS HEADSET

Omnidirectional microphone, replaceable microphone lead, clear transmission also during athletic performances.



TOM-AUDIO LM-3211



CLIP-ON MICROPHONE

Inconspicuously worn on the lapel, cardioid characteristic, weight: 18 g with lead and plug, cable length to connector: 85 mm



MIC-5C



MICROPHONE STAND

With microphone boom, height: 960 - 1450 mm, weight approx. 1.5 kg, plastic, steel and aluminium, foldable feet.



MB-3



STAND CARRIER BAG

Transport and store our rental equipment safely and practically. You can store up to two stands in the black carrying bag.



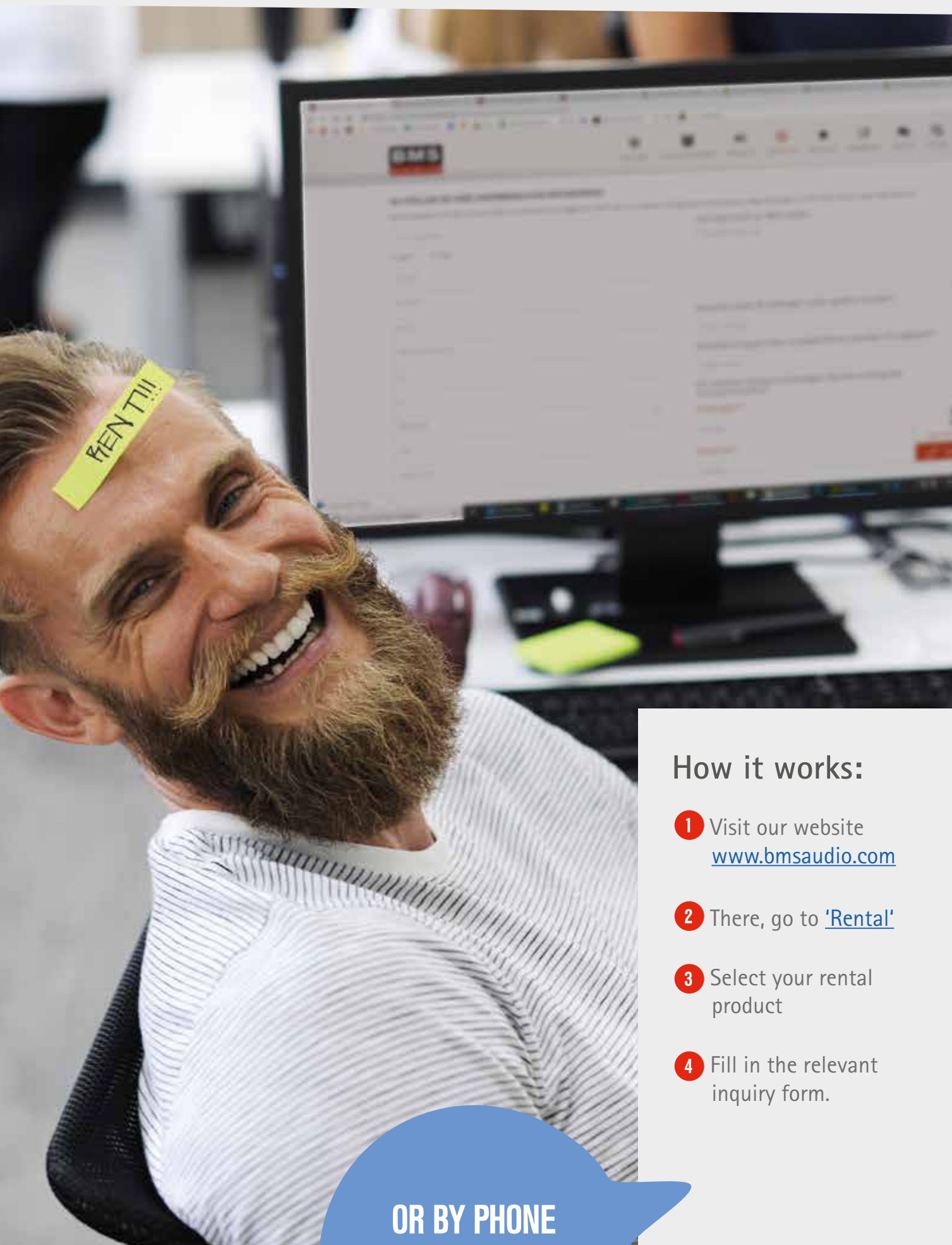
MH-31



MICROPHONE CLAMP

Makes the micro stand even more convenient: the inclinable microphone clamp serves to attach the radio hand microphone.





How it works:

- 1 Visit our website
www.bmsaudio.com
- 2 There, go to '[Rental](#)'
- 3 Select your rental product
- 4 Fill in the relevant inquiry form.

OR BY PHONE
+49 - 7951 9622 - 200



BMS Audio GmbH

Area:



Roßfelder Straße 65/5
D-74564 Crailsheim

Phone:



+49 7951 9622 0

Web:



info@bmsaudio.com
www.bmsaudio.com